

Sliding Patio Door Collection

PREMIUM VINYL PATIO DOORS



CONTEMPORARY PATIO DOOR
FRENCH SLIDING PATIO DOOR



IMPRESSIVE INSIDE & OUT



Superior Performance. Lasting Appeal.

Simonton® Sliding Patio Doors seamlessly connect your indoor and outdoor living spaces with expansive glass and smooth glide operation. Our Contemporary and French Rail Door Collections are precisely manufactured to earn the AAMA Gold Label, signifying best-in-class durability, weather resistance, and energy efficiency.



PREMIUM VINYL

Simonton vinyl is crafted with pride in the USA using high-quality raw materials for exceptional durability, thermal efficiency, and resistance to weather, insects, and decay.



COMPREHENSIVE WARRANTY

We stand behind the quality and craftsmanship of our windows and proudly offer a robust warranty covering our vinyl, hardware and glass units to ensure your total peace of mind.



TRUSTED EXPERTISE

We are proud to embrace our legacy as an American manufacturer—and we continue to deliver on our reputation for innovation and authenticity built over 75 years in the business.

The Perfect Style for Your Home.

Open your home to more natural light and outside views with two distinct door styles that will complement your home's architectural design. Select from a host of available options that will enhance both performance and beauty.



CONTEMPORARY PATIO DOOR

With a room-opening design, the Contemporary Patio Door fluently connects your indoor and outdoor living spaces. Its narrow frame and broad expanse of glass provide wide-open views and more natural light.



FRENCH SLIDING PATIO DOOR

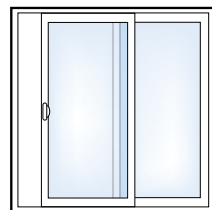
Featuring a broader traditional profile, the classic appearance of the French Sliding Patio Door provides the elegant look of a hinged door with the space-saving operation of a sliding patio door.

FEATURES

- Multi-point locking system secures the door with one operation.
- Tight seal against air and water infiltration with a full integral interlock.
- Smooth, easy glide panels feature wide-set, corrosion-resistant rollers and sill. Available stainless-steel rollers offer increased durability.
- Durable double-strength, tempered glass increases safety and helps reduce unwanted sound.
- Available frame options deliver precise installation for either replacement or new home applications.

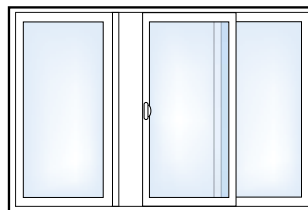
PANEL CONFIGURATIONS

Contemporary and French Patio Doors are custom-sized for your home in 2-, 3- and 4-panel configurations. Transoms and sidelites are available to expand the door for more natural light.



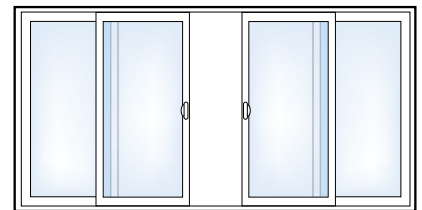
2-PANEL

Either the left or right panel can open.



3-PANEL

Active center panel can open left or right.



4-PANEL

Both center panels are active.

Energy Savings. Interior Comfort.

Simonton Patio Doors provide excellent energy performance to help reduce your heating and cooling costs and provide seasonal interior comfort. Additional glass options are available to enhance security, acoustics, privacy and fade protection.



LOW-E GLASS

Our selection of ProSolar® Low-E Glass offers specialized performance for diverse climates and seasonal variations. Select the ideal glass for your home to help reduce heating and cooling costs, block damaging ultraviolet rays and provide year-round comfort.



- ✓ Standard ProSolar Low-E Glass helps keep warm air in during the winter months. In summer, it helps deflect external heat and retains cooled air.



- ⊕ ProSolar Sun Low-E Glass lets in the sun's warming rays while blocking external heat loss, helping to keep homes warm in cooler climates that require more energy to heat.



- ⊕ ProSolar Shade Low-E Glass offers superior solar control and insulating performance, making it ideal for warmer climates with more intensive interior cooling needs.



- ⊕ ProSolar Shade Plus Low-E Glass offers exceptional solar control and insulating performance, making it ideal for warmer climates with more intensive interior cooling needs that also reduces heat loss in cooler months. Lightly tinted design allows visible light inside while reducing glare.



- ⊕ PLUS4 is an interior surface Low-E glass combined with our ProSolar glass packages. Energy-saving PLUS4 reflects heat back into the home, maintaining interior warmth and providing superior insulation to help keep your living spaces more comfortable in colder climates.

KEY

- ✓ – Standard
- ⊕ – Optional



✓ **GAS FILL**

Standard **Argon gas** (six times denser than air) is sealed between the glass panes to increase insulation and reduce energy loss.



SPACER SYSTEMS

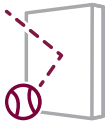
Glass panes are separated by a spacer system that helps seal in functional gases and create an airtight seal.

- ✓ The standard **Intercept®** spacer system helps keep glass warm and expands and contracts for reduced seal failure.
- ⊕ The **Supercept™** spacer system utilizes a stainless steel alloy that offers increased durability and thermal efficiency.
- ⊕ The non-metallic foam **Super Spacer®** is non-conductive and reduces energy transference and unwanted noise.



✓ **DOUBLE-STRENGTH GLASS**

Thick, double-strength glass is break resistant and offers increased sound control.



⊕ **SAFETY GLASS**

Heat-strengthened tempered glass is stronger than regular glass and safely breaks down into pebbles if broken. Tempered glass is often a building code requirement for use in bathrooms and windows near the floor.



⊕ **SOUND & SECURITY GLASS**

Laminated glass consists of a durable interlayer sealed between two layers of glass that withstands forced entry, greatly reduces unwanted sound and deflects up to 99% of damaging ultraviolet (UV) rays that cause interior fading.



⊕ **SOUND-ABATEMENT GLASS**

If you live in a noisy area, ask about specialty glass designed to reduce unwanted noise infiltration.



⊕ **TITLE 24**

Can be ordered to meet or exceed the California Energy Commission's standards for Title 24 compliance.



⊕ **ENERGY STAR®**

Simonton offers optional glass packages that meet ENERGY STAR requirements for optimal energy performance and comfort in any climate.

DECORATIVE GLASS OPTIONS

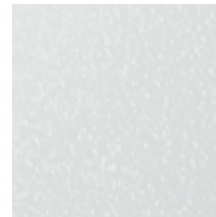
Decorative glass features unique textures that help maximize privacy while allowing in ample natural light. Tinted glass helps control solar heat gain while reducing glare and visibility into your home.



⊕ Rain



⊕ Glue Chip



⊕ Obscured



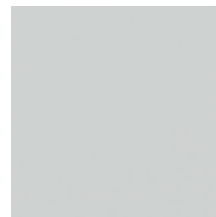
⊕ Flemish



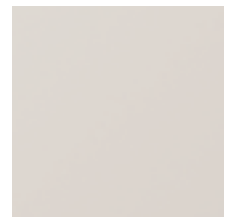
⊕ Delta Frost



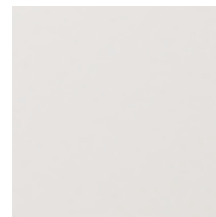
⊕ Reed



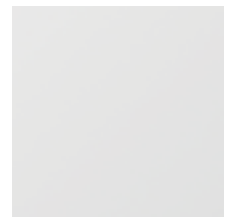
⊕ Satin Etch



⊕ Solarcool®
Bronze



⊕ Bronze Tint



⊕ Gray Tint

KEY

- ✓ - Standard
- ⊕ - Optional



Design Options

Bring your vision to life with a variety of color, hardware and grille options that will complement the interior and exterior aesthetic of your home.

EXTERIOR/INTERIOR VINYL COLORS



White



Tan

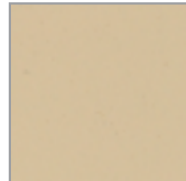
CUSTOM EXTERIOR FINISHES



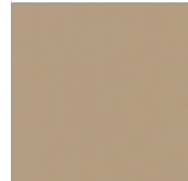
Cream



Silver



Tan



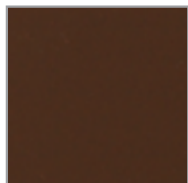
Driftwood



Brick



Pine



Chocolate



Espresso



Bronze



Black

DOOR HARDWARE

Color-coordinated handles can be upgraded to a distinctive metallic finish. Handles are available in keyed, non-keyed, and keyed alike. We also offer a choice of split-finish door handles. Choose any interior finish with a color-matched exterior as a standard offering.

COLOR-MATCHED HANDLE FINISHES



White



Tan

PREMIUM HANDLE FINISHES



Satin Nickel



Antique Brass



Brass



Oil-rubbed Bronze



Dark Bronze

GRILLES PROFILES & PATTERNS

Traditional or contemporary, the right grille profile and pattern can transform the look of your home. Easy-care grilles are located between the panes of glass and never need to be dusted or cleaned.

GRILLE PROFILES



5/8" Flat

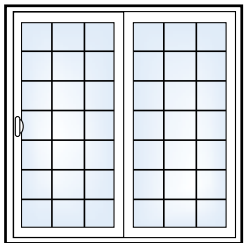


3/4" Contoured

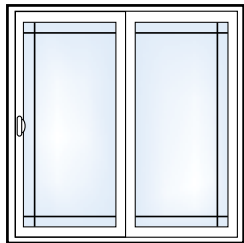


1" Contoured

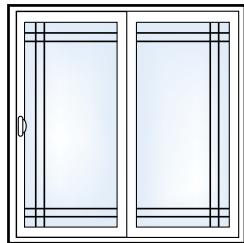
GRILLE PATTERNS



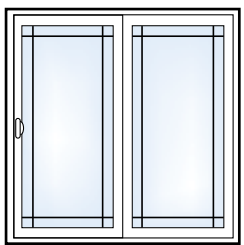
Colonial



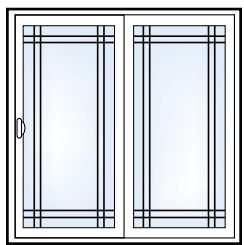
Perimeter



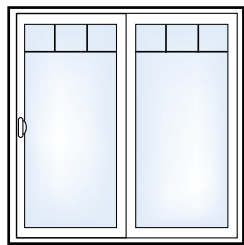
Double Perimeter



Queen Anne



Double Queen Anne



Victorian



Due to limitations in the printing process, actual colors may vary from printed materials. Please see a sample of the product before making your final color selection.



SCAN TO FIND
YOUR PERFECT
WINDOW & DOOR.



Scan to learn more about
Simonton Contemporary Patio Door.



Scan to learn more about
Simonton French Patio Door.



Part of the Cornerstone Building Brands family,
the #1 manufacturer of windows in North America.

 Made in USA

The information contained is current at the time of printing. Changes to the product(s) may have been made since publication. Not all product styles and options available in all areas. Please consult your sales representative prior to purchasing. Due to limitations in the printing process, actual colors may vary from printed materials. Please see a sample of the product before making your final color selection.

Simonton® and ProSolar® are registered trademarks and Supercept™, the Simonton logo and the stylized "S" are trademarks of Simonton Windows & Doors, Inc. Intercept® and Solarcool® are registered trademarks owned by Vitro. Super Spacer® is a registered trademark of Quanex Building Products. ENERGY STAR® is a registered trademark of the U.S. Environmental Protection Agency.

SIMONTON.COM



5020 Weston Parkway, Cary NC 27513 | 1-800-SIMONTON (1-800-746-6686)

IMPRESSIVE INSIDE & OUT